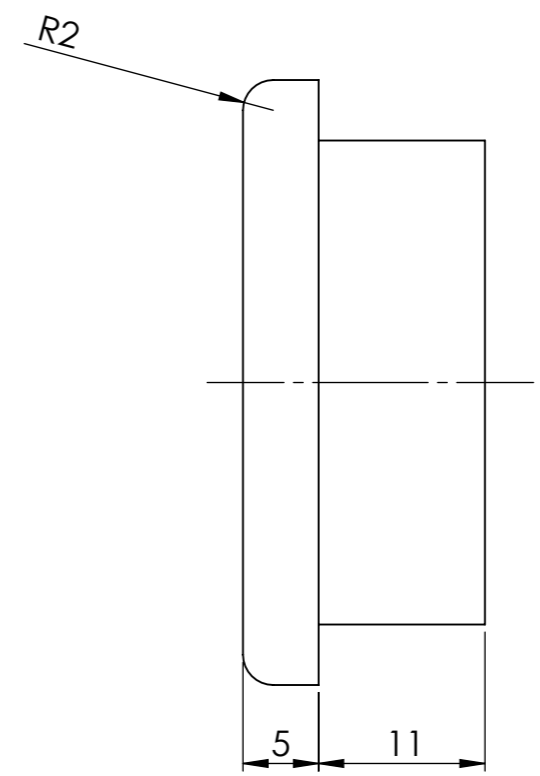
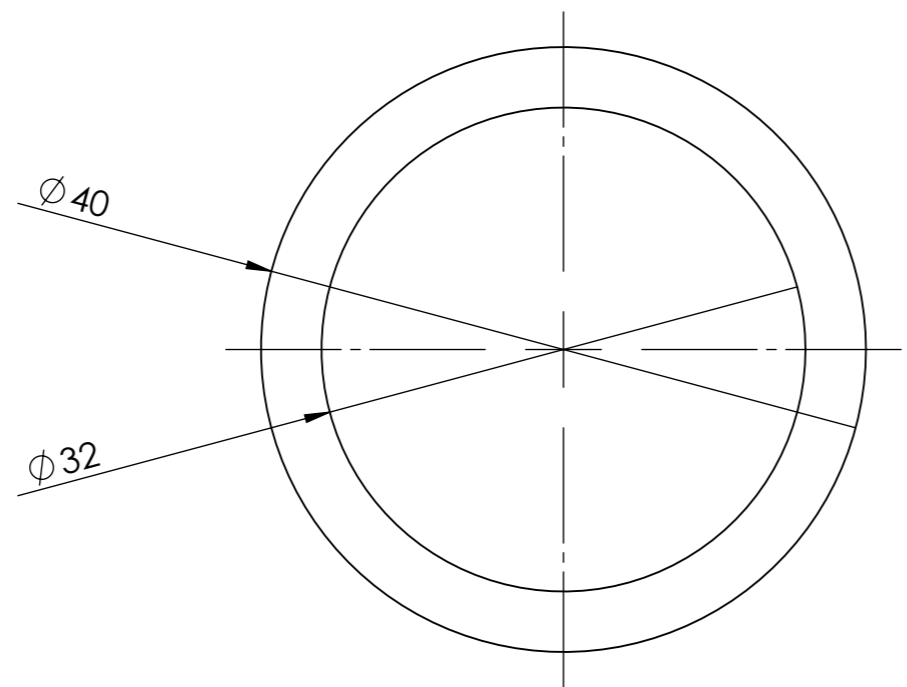
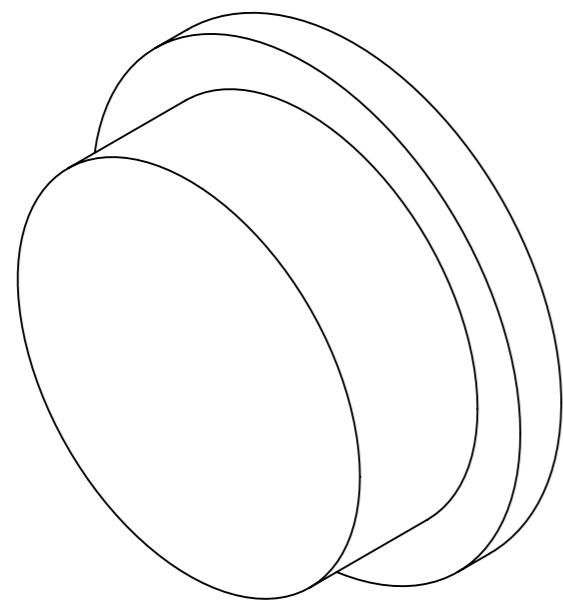


DIESE ZEICHNUNG DARF WEDER Vervielfältigt NOCH DRITTEN ANGEBOHTEN ODER ANDERWEITIG MISSBRÄUCHLICH BENUTZT WERDEN (PARAGR. 15 FF. URHG., PARAGR. 17, 18 UWG.) ALLE RECHTE NACH PARAGRAPH 12 I, 35 PATG., UND PARAGR. 2 GRMG. VORBEHALTEN. BEI ZWIDERHANDLUNGEN WERDEN WIR DEN VERLETZER AUF BESEITIGUNG DER BEINTRÄCHTIGUNG UND SCHADENERSATZ IN ANSPRUCH NEHMEN (PARAGRAPH 97 FF. URHG., PARAGR. 19 UWG., PARAGR. 823, 824 BGB., PARAGR. 8 PATG.).



<b>FIBROLUX</b> VERSTÄRKT KUNSTSTOFFE www.fibrolux.com info@fibrolux.com Tel.+49 6122 91000				THIS DRAWING COULD BE CHANGED ONLY IN FIBROLUX CAD SYSTEM	
NAME: DATE:		FIRST ANGLE PROJECTION		CUSTOMER:	
DESIGNED BY: L.Thiele 01.06.2023				PROJECT:	
CHECKED BY:		PROJECT:		DESCRIPTION:	
SIZE: <b>A3</b>	SCALE: <b>2:1</b>	SHEET: <b>1/1</b>	WEIGHT (KG): <b>0,004</b>	ASSOCIATED PARTLIST:	
GENERAL TOLERANCES: DIN EN 13706 ISO 2768 - c		REFER TO PROTECTION NOTICE ISO 14016: THE REPRODUCTION, DISTRIBUTION AND UTILIZATION OF THIS DRAWING AS WELL AS THE COMMUNICATION OF ITS CONTENTS TO OTHERS WITHOUT EXPRESS AUTHORIZATION IS PROHIBITED. OFFENDERS WILL BE HELD LIABLE FOR THE PAYMENT OF DAMAGES. ALL RIGHTS RESERVED IN THE EVENT OF THE GRANT OF A PATENT, UTILITY MODEL OR DESIGN.		DRAWING NO.: <b>Stopfen für Rohr 40x32</b>	
REFERENCED 3D-MODEL: Stopfen für Rohr 40x32				REV.:	